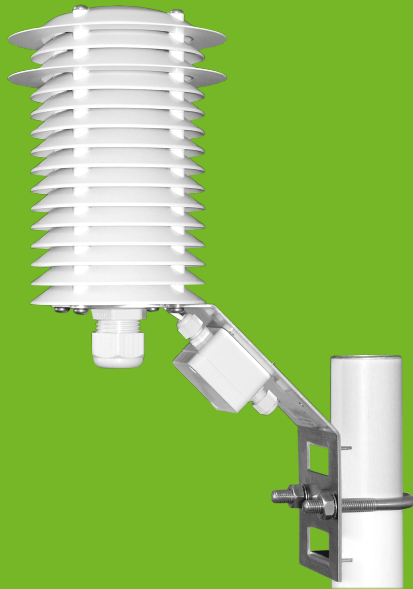


Sensor Shelter WITH ARTIFICIAL VENTILATION



With ventilation system

This artificially ventilated sensor shelter is designed for universal use with relative humidity and air temperature measuring instruments. The ventilation system draws ambient air and conveys it through the sensor. Possible measuring errors caused by direct or reflected radiation, especially during calm, will be avoided.

- Artificial ventilation of the sensors
- No recirculation of the heated air into the ventilation circuit
- Light and radiation transmittance almost eliminated
- UV and weather resistant material
- Extremely robust with improved lamella system
- Universally applicable for different sensors
- Easy installation including mounting material for different masts

APPLICATIONS

- Agricultural meteorology
- Industry and hydrology
- Artificial snow
- Traffic meteorology
- Building services

Professional Line	Sensor Shelter
Id-No.	00.08141.600004
Range of application	-40...+70 °C
Supply voltage	9.5...13.2 VDC
Power consumption	1.4 W (max. 1.8 W)
Dimensions	Ø 150 mm, Height: 395 mm (incl. mounting)
Amount of lamellas	15
Protection class	IP 68
Weight	1.4 kg
Included in delivery	Srewing for sensor diameter 14...21 mm
Options (order separately)	32.08141.001010: Adapter for sensor diameter 5 mm 67.26010.540100: Screwing for sensor diameter 18...25 mm

As of: 17.03.2025