

# MeteoStation[cold climate]



## Reliable weather data even in icy conditions

### MONITORING WEATHER CONDITIONS IN EXTREME ENVIRONMENTS

The MeteoStation[cold climate] is robust and resistant to the extreme temperatures and conditions in cold climates. Its advanced sensors are specifically designed to operate reliably in very low temperatures and deliver precise data so weather services, meteorologists, and researchers can accurately monitor and analyze conditions in challenging environments. With reliable data, communities can better prepare for extreme weather and minimize potential risks.

### DATA LOGGER SER[LOG] FOR LONG-TERM WEATHER ANALYSIS

Accurate data acquisition is a critical component of any weather monitoring solution. Ser[LOG] is a scalable communication platform for professional meteorological data acquisition and data processing.

### OVERVIEW METEOSTATION[COLD CLIMATE]

Track and monitor eight weather parameters directly at your location:

- Wind direction
- Wind speed
- Air temperature
- Relative humidity
- Precipitation amount
- Precipitation rate
- Barometric pressure
- Dew point (calculated value)

### BENEFITS



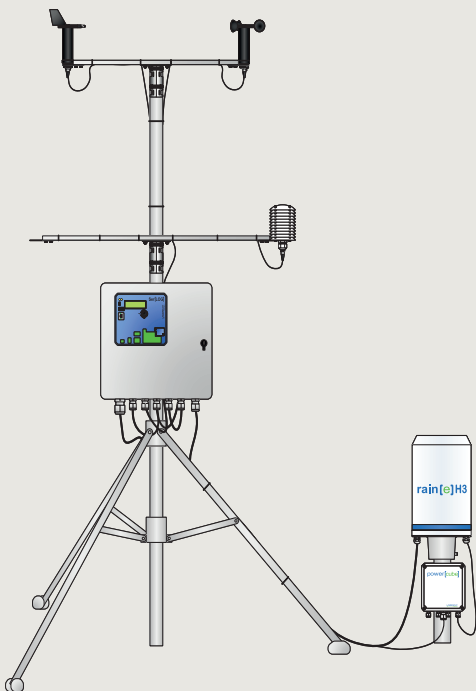
Capture the accurate, localized weather data you need to make timely, critical decisions



Ser[LOG] for data acquisition and data processing with minimal effort and high flexibility



Low-maintenance deployment-ready weather station featuring special, cold-resistant sensors



### POSSIBLE APPLICATIONS:

- Weather services
- Universities
- Cable cars
- Research
- Meteorological studies

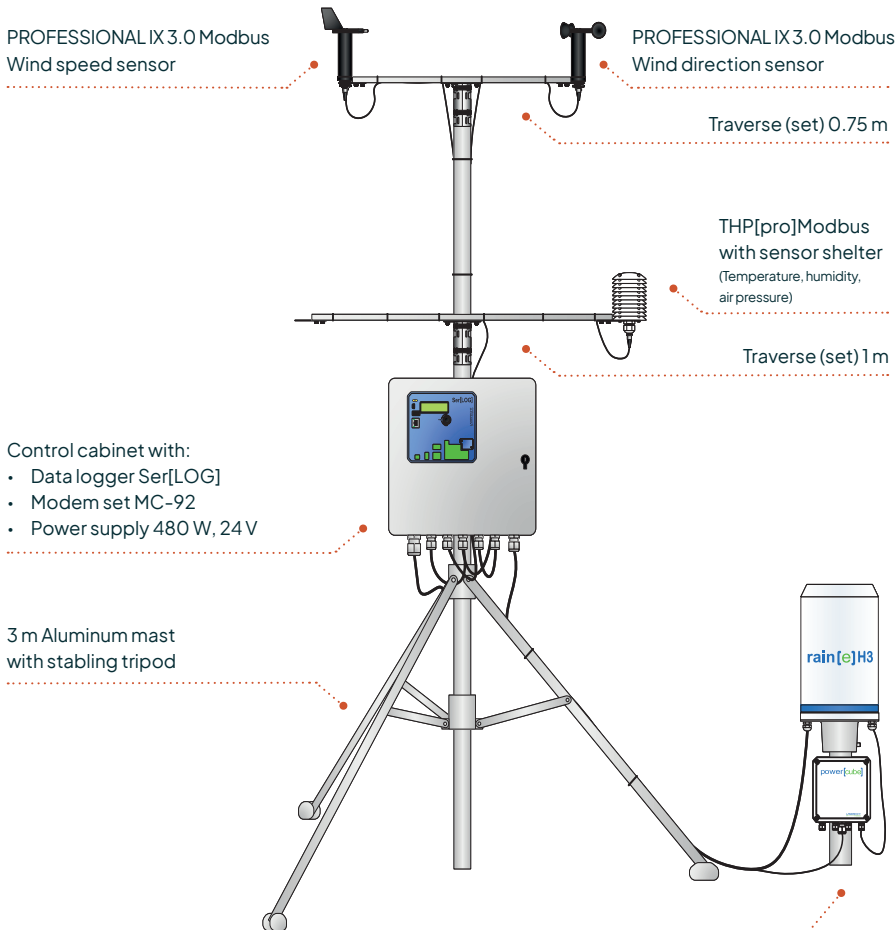
# Precise data acquisition and analysis in cold regions

As severe weather events continue to increase in frequency and severity, more and more businesses, government agencies, and individuals are concerned about the conditions surrounding them. More people are opting for proactive weather monitoring to understand how the world is changing and what they need to do to respond.

Government, commercial, and private organizations need accurate weather information to make critical planning decisions. For example, parks and resorts require reliable data for volatile alpine weather to keep people safe. The same information can help community leaders understand spring thaws better to protect people and infrastructure in the floodplain. That's why the MeteoStation[cold climate] was created to improve weather intelligence and time-critical decisions in extreme conditions.

## The MeteoStation[cold climate] overview:

ID 21.81003.138500



Control cabinet with:

- Data logger Ser[LOG]
- Modem set MC-92
- Power supply 480 W, 24 V

3 m Aluminum mast with stabilizing tripod

PROFESSIONAL IX 3.0 Modbus Wind speed sensor

PROFESSIONAL IX 3.0 Modbus Wind direction sensor

Traverse (set) 0.75 m

THP[pro] Modbus with sensor shelter (Temperature, humidity, air pressure)

Traverse (set) 1 m

## Key features

### PROVEN, FIRST-CLASS METEOROLOGICAL SENSORS

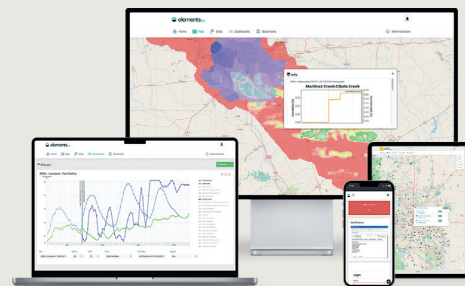
- Durable technology delivers scientific accuracy in cold climate regions
- Individual sensors can be replaced easily without losing all measurement data
- Straightforward assembly and do-it-yourself service

### SER[LOG] DATA LOGGER

- Alarm system for 10 warning channels using built-in and external relays (e-mail, SMS)
- Stores data reliably for one year in ring buffer
- User-friendly with free access to all connections and controls

### AEM ELEMENTS™ 360 SOFTWARE (OPTIONAL)

- Analyze real-time data from your station for better decision-making and planning
- Customize alerts to your specific thresholds and receive timely notifications when conditions change
- Edge-to-cloud data security protects your data and privacy and ensures accurate measurements



ELEVATE YOUR WEATHER MONITORING CAPABILITIES TODAY

To learn more about our innovative solutions, visit [aem.eco](http://aem.eco) or contact us at [info@aem.eco](mailto:info@aem.eco)