

MeteoStation[harbor]



Engineered to withstand storms and seawater

REAL-TIME MONITORING OPTIMIZES OPERATIONS AND MINIMIZES RISKS

The MeteoStation[harbor], specially designed for use at sea and in waters, is not only extremely reliable, it's also seawater-proof. Thanks to its robust design, it withstands the tough conditions on and in the water and continuously provides accurate measurement data for weather and water monitoring. In port facilities, the precise weather data from the MeteoStation[harbor] help to ensure the safety of ships and crews as well as increasing the efficiency of operations.

DATA LOGGER SER[LOG] FOR LONG-TERM WEATHER ANALYSIS




Accurate data acquisition is a critical component of any weather monitoring solution. Ser[LOG] is a scalable communication platform for professional meteorological data acquisition and data processing.

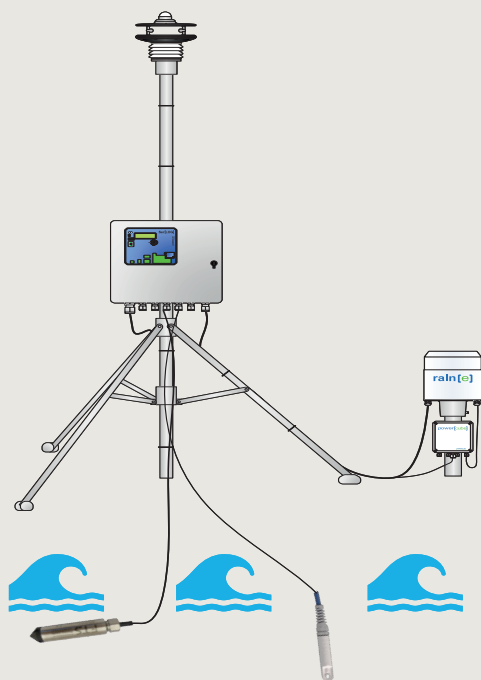
OVERVIEW METEOSTATION[HARBOR]

Track and monitor eleven weather parameters directly at your location:

- Wind direction
- Wind speed
- Air temperature
- Relative humidity
- Global radiation
- Barometric pressure
- Dew point (calculated value)
- Precipitation amount & intensity
- Water temperature
- Water level

BENEFITS

-  Capture the accurate, localized weather data you need to make timely, critical decisions
-  Ser[LOG] for data acquisition and data processing with minimal effort and high flexibility
-  Low-maintenance deployment-ready weather station featuring seawater-resistant, state-of-the-art sensors



POSSIBLE APPLICATIONS:

- Port facilities
- Shipyards
- Weather services
- Climate research
- Meteorological & hydrological studies

Seawater-resistant weather station for use at the seaside

As severe weather events continue to increase in frequency and severity, more and more businesses, government agencies, and individuals are concerned about the conditions surrounding them. More people are opting for proactive weather monitoring to understand how the world is changing and what they need to do to respond.

Government, commercial, and private organizations need accurate weather information to make critical planning decisions. Using the seawater-resistant MeteoStation[habor], organizations can prepare better for weather events and improve time-critical decisions to protect the supply chain and global economy.

The MeteoStation[habor] overview:

ID 21.83002.138700

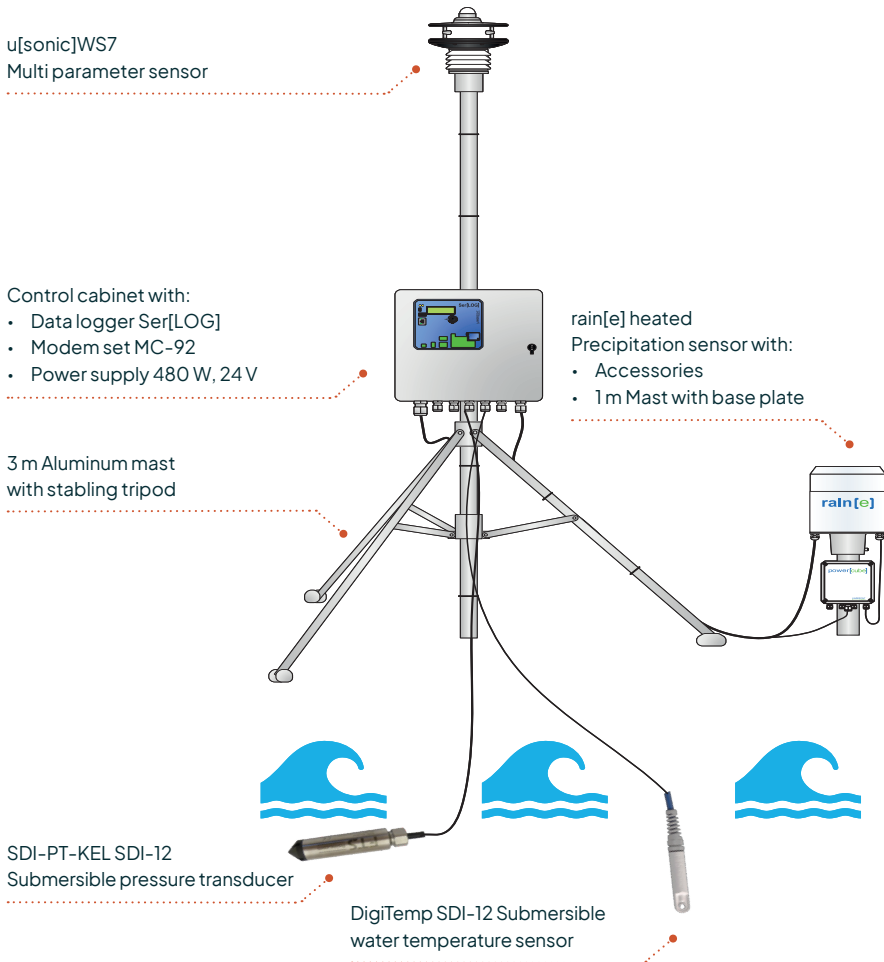


Photo credits/Copyright: © Thomas@AdobeStock.com

Key features

PROVEN, FIRST-CLASS METEOROLOGICAL SENSORS

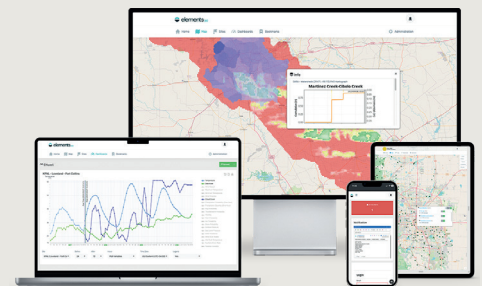
- Robust technology with independent, integrated sensors and no moving parts for superior accuracy of each measurement
- Innovative, compact design minimizes labor and installation costs for easy setup

SER[LOG] DATA LOGGER

- Alarm system for 10 warning channels using built-in and external relays (e-mail, SMS)
- Stores data reliably for one year in ring buffer
- User-friendly with free access to all connections and controls

AEM ELEMENTS™ 360 SOFTWARE (OPTIONAL)

- Analyze real-time data from your station for better decision-making and planning
- Customize alerts to your specific thresholds and receive timely notifications when conditions change
- Edge-to-cloud data security protects your data and privacy and ensures accurate measurements



ELEVATE YOUR WEATHER MONITORING CAPABILITIES TODAY

To learn more about our innovative solutions, visit aem.eco or contact us at info@aem.eco