



USER MANUAL

16321 on mounting plate with
built-in level (accessory)

16321

Lightness Sensor



Safety instructions

This system is designed according to the state-of-the-art accepted safety regulations. However, please note the following rules:

- Before putting into operation please read all respective manuals!
- Please observe all internal and state-specific guidelines and/or rules for the prevention of accidents. If necessary ask your responsible safety representative.
- Use the system only as described in the manual.
- Always have the manual at hand at the installation site.
- Use the system within the specified operating condition. Eliminate influences, which might impair the safety.
- Prevent the ingress of unwanted liquids into the devices.

Warranty

Please note the loss of warranty and non-liability by unauthorized manipulation of the system. You need a written permission of the LAMBRECHT meteo GmbH for changes of system components. These activities must be operated by a qualified technician.

The warranty does not cover:

1. Mechanical damages caused by external impacts (e.g. icfall, rockfall, vandalism).
2. Impacts or damages caused by over-voltages or electromagnetic fields which are beyond the standards and specifications in the technical data.
3. Damages caused by improper handling, e.g. by wrong tools, incorrect installation, incorrect electrical installation (e.g. false polarity) etc.
4. Damages which are caused by using the device beyond the specified operation conditions.

Features

- Weather resistant aluminium die-cast housing IP 65
- Integrated transmitter
- Easy mounting and adjustment by three-point plate and built-in box level
- Standard unit: Lux = lx - 100 Lux equal 1 W/m² or 9.29 foot candle
- Analog signal output
- Factory test certificate included (DIN EN 10204)



Pin assignments

Fig. 1 - Version:
 00.16321.010342
 00.16321.010302
 00.16321.010012

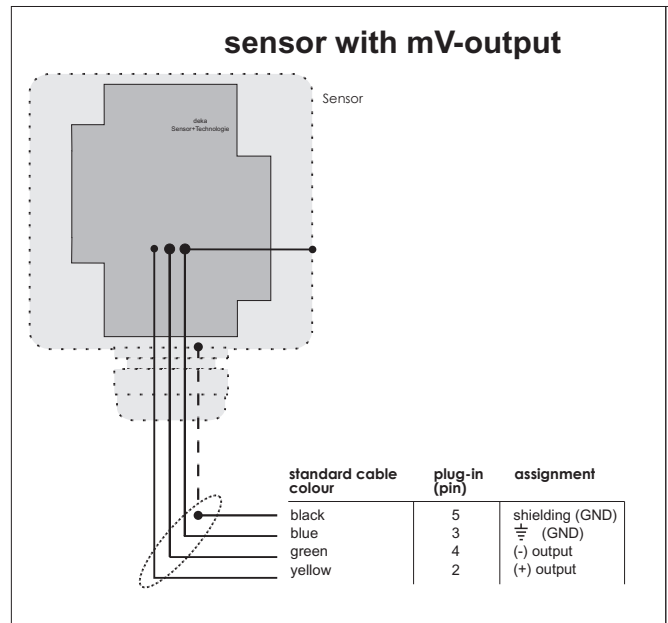


Fig. 2 - Version: 00.16321.010012

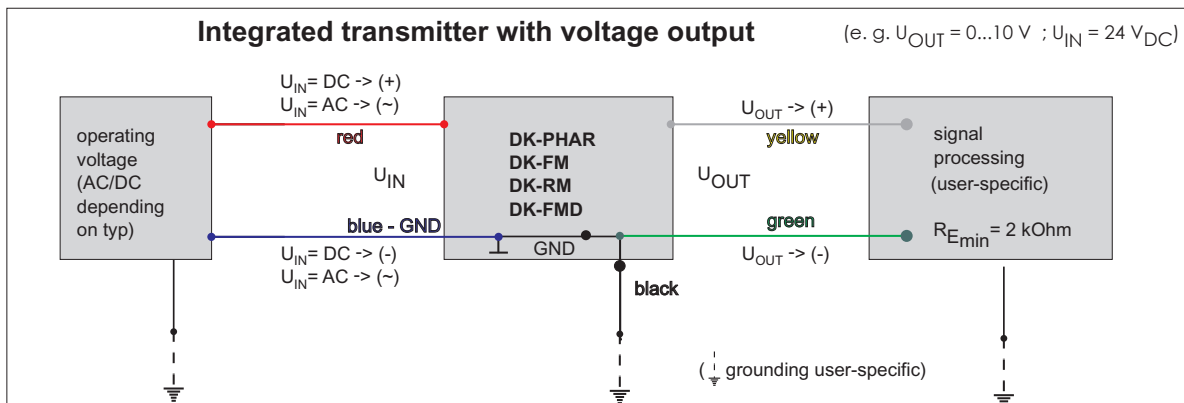
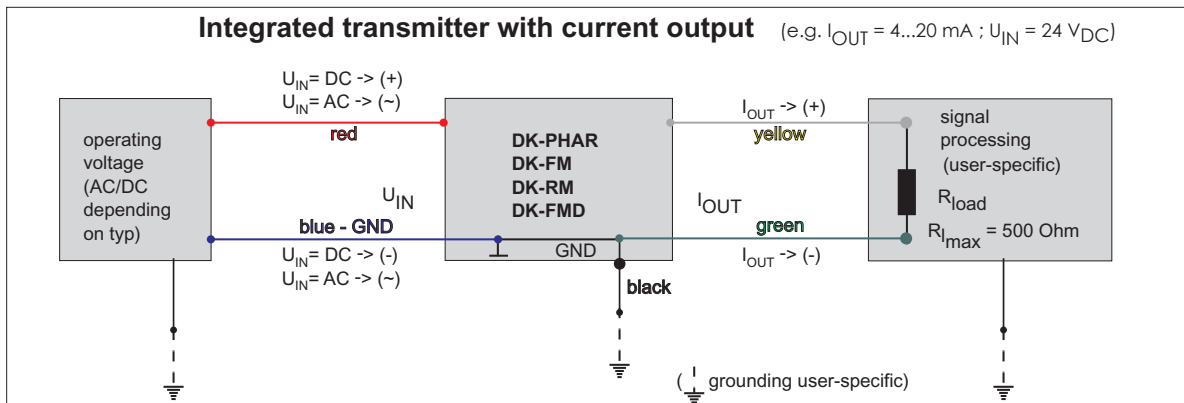


Fig. 3 - Version: 00.16321.010342 and 00.16321.010302



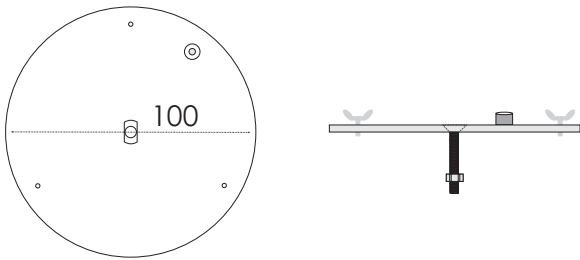
input 24 V_{DC} : $U_{INmin} = (12 + 0,02 \times R_I)\text{V}$ $U_{INmax} = 27\text{ V}$
 input 24 V_{AC} : $U_{INmin} = 24\text{ V} - 15\%$ $U_{INmax} = 24\text{ V} + 20\%$

Attention:
 Input and output
 carry one-sided
 GND-potential !!!

Accessories

Please order the accessories separately.

Id No. 32.16321.001000: Three-point mounting plate made of aluminum; with built-in level for horizontal alignment of the sensor; weight approx. 0.2 kg



Id No. 33.14627.012000: Stainless steel wall bracket; weight approx. 0.6 kg

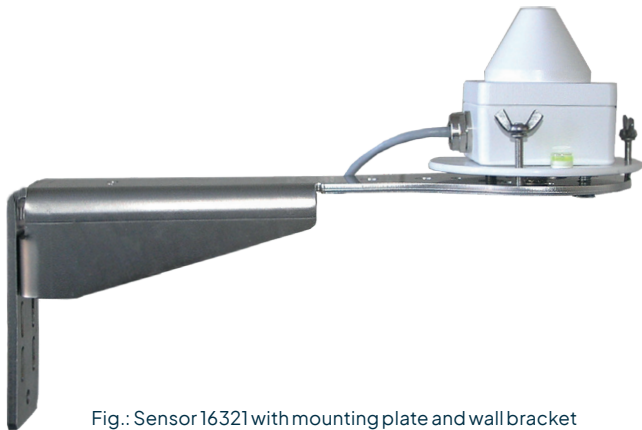
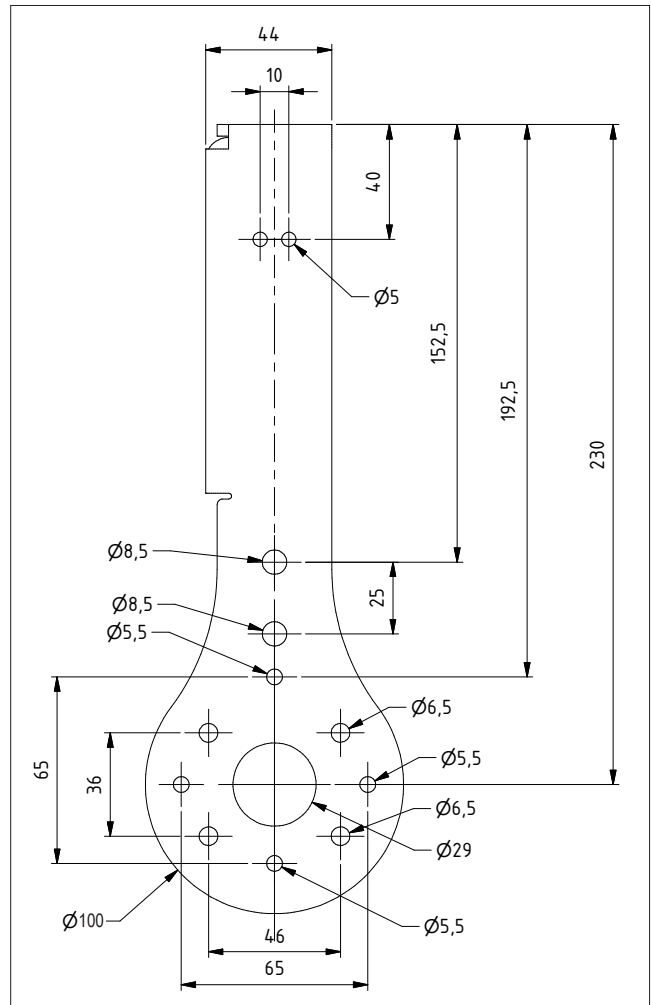


Fig.: Sensor 16321 with mounting plate and wall bracket

Dimensions wall bracket



Technical data

16321 LIGHTNESS SENSOR	
Id No.	00.16321.010302 (0...20 mA) 00.16321.010342 (4...20 mA) 00.16321.010012 (0...10 V)
Measuring elements	Special Si photodiode
Measuring range	0...100 klx
Range of application	-30...+65 °C
Response time	< 0,5 ms
Inclination error	< ± 5 %
Non-linearity	± 1 %
Output	00.16321.010302 (0...20 mA); 00.16321.010342 (4...20 mA) 00.16321.010012 (0...10 V)
Supply voltage	24 VDC
Power consumption	Max. 40 mA
Protection class	IP 66
Dimensions/ Weight	65 x 59 x 68 mm/ 0.3 kg
Included in delivery	3.5 m cable

Disposal

LAMBRECHT meteo GmbH is listed and registered at the Stiftung Elektro-Altgeräte Register ear under:

WEEE-Reg.-Nr. DE 45445814

In the category of monitoring and control instruments, device type: "Monitoring and control instruments for exclusively commercial use".

Within the EU



The device has to be disposed according to the European Directives 2002/96/EC and 2003/108/EC (Waste Electrical and Electronic Equipment). Do not dispose the old device in the household waste! For an environmentally friendly recycling and disposal of your old device, contact a certified disposal company for electronic waste.

Outside the EU

Please follow the regulations in your country regarding the appropriate disposal of waste electronic equipment.

Copyright © 2025 LAMBRECHT meteo GmbH. All rights reserved.
Information in this document subject to change without notice.
Photo copyright: © Parilov - Adobe stock

16321_b-de.indd 09.25

LAMBRECHT meteo GmbH
Friedländer Weg 65
37085 Göttingen
Germany

Tel +49-(0)551-4958-0
E-Mail info-lambrecht@aem.eco
Internet www.lambrecht.net

